



Prospectus



Welcome

“We aim to create a warm, welcoming school where each child feels happy, safe, self-confident and valued; and strives, with the help of caring, committed staff, to fulfil his or her potential.”

BALLYNURE PRIMARY



Dear Parents and Guardians,

I would firstly like to extend a warm welcome to Ballynure Primary School, a location of exceptional learning, nestled in the heart of our vibrant rural community.

At Ballynure Primary, we take pride in fostering an environment where each child's curiosity is sparked, and their potential is nurtured with the care and dedication of our whole staff. We embrace the spirit of close-knit community partnerships to further each child's learning experience and embark on a journey to meet each child's unique potential through varying opportunities. Our dedicated staff team is committed to providing not just a high-quality education, but also an enriching experience to develop the whole child in preparation for later life.

Our ultimate goal is to create a school environment where your children feel safe, supported and motivated to reach their full potential. In collaboration with my staff, governors and you, the parents and carers; we strive to create a positive and inclusive community that promotes academic excellence, character development and a love for lifelong learning.

There are so many different aspects to our school life which we hope will be highlighted within this prospectus. However, it is impossible to capture every moment, so we invite you to join us in person, either for a private school tour, or as part of our Open Day. We feel this will give you the best insight into our wonderful school community and provide you with the information you need in order to make the next step in your child's journey.

We look forward to welcoming you,

Mr C. Trussell (Principal)

Mr R. McMullan (Chair of Governors)

Aims & Ethos

During each day in Ballynure Primary School we aim to approach daily life with the following aims in mind:

- To create a happy, caring and secure learning environment for all our pupils.
- To provide a broad and balanced curriculum, filled with opportunities in and out of the classroom, which will develop the whole child in preparation for their future.
- To be a safe and responsible user of technology.
- To encourage the personal qualities of self-confidence, self-discipline, perseverance, resilience and independence.
- To encourage each child to develop self-respect, respect and concern for others, tolerance, integrity and moral courage.
- To enable each child to appreciate the environment and his/her opportunities and responsibilities for its conservation.
- To promote good relationships with parents, other schools and the local community.



Admissions

Starting school is a very important time for you, your child and the school. We all need to work together to make the transition smooth and rewarding. The full Board of Governors draws up and approves the Admissions Criteria each year, with the best intentions of the school and wider community in mind.

As of academic year, beginning September 2024, Ballynure Primary School will operate with 7 classes (P1-P7), an enrolment number of 210 and a Primary 1 Admissions number of 30.

In the event of the school being oversubscribed the Board of Governors will apply the following criteria:

- Children who, at the date of their application, are a child of a family currently enrolled at Ballynure Primary School.
- Children whose parent is a permanent employee at Ballynure Primary School at the time of their proposed admission.
- Children for whom Ballynure Primary School is the nearest suitable school as measured from their normal place of residence by distance by road on the AA Mileage Calculator www.theaa.com to 2 Lismenary Road at the closing date of application.
- If children are still tied at criterion 3, at the date of their application, the priority shall be determined amongst these tied applicants according to the placement of their surname (as entered on their Birth Certificate) in a rank order determined according to a randomly selected order of all the letters (if applicants have the same surname then the alphabetical order of the initials of the forename as recorded on the Child's Birth Certificate shall then be used) in the order set out below:

H P M c W Q V E J U R M D I Y F S L Z C M a c X B T O N G K A

The criteria are listed in order of priority and can be found on the Education Authority website, as well as the school website.

Curriculum Overview



Ballynure Primary School aims to put your child and their voice at the centre of the curriculum. We provide a broad and balanced curriculum for all children with emphasis placed on the development of every pupil. We take account of your child's interests, abilities, and present stage of development in order to provide every pupil with the ability to experience success in learning at as high a standard as possible.

The Primary Curriculum is set out in six areas of learning:

- Language and Literacy (Talking and Listening, Reading and Writing)
- Mathematics and Numeracy
- The Arts (Art, Drama and Music)
- The World Around Us (Geography, History, Science and Technology)
- Personal Development and Mutual Understanding
- Physical Education

Each class is equipped with an Interactive Whiteboard and wireless computer access. iPads and Laptops are used throughout the school to enhance teaching and learning and develop essential skills in Using ICT.

Our Foundation and Key Stage One classes enrich the curriculum through a variety of Activity and Play Based Learning, giving our pupils access to a wide range of learning styles, designed to meet each individual need.



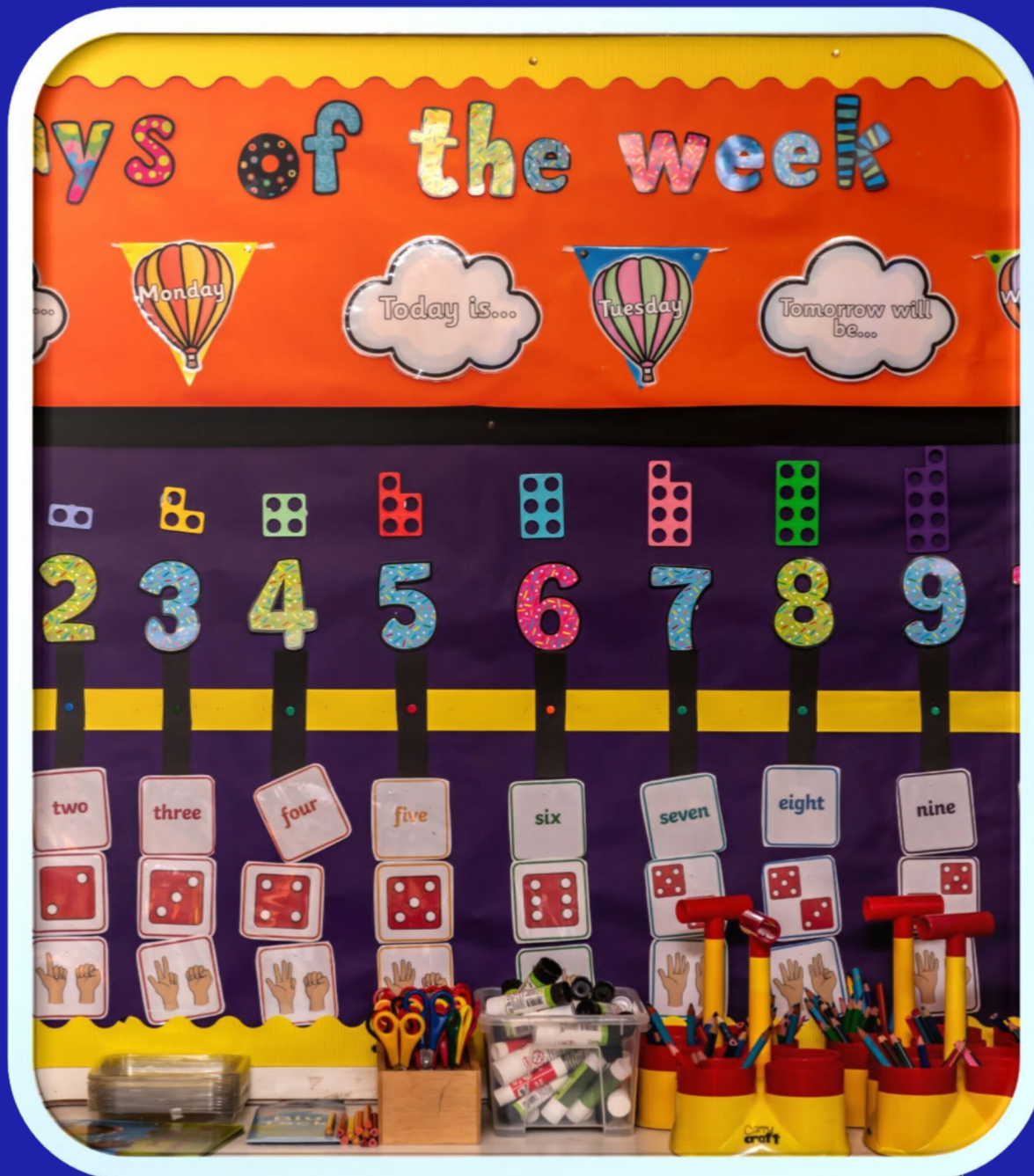
Our Subjects



Literacy

Literacy is a vital way of communicating in school and in everyday life. In studying Literacy, pupils develop skills in talking and listening, reading and writing. It enables them to express themselves creatively and imaginatively and to communicate with others effectively.

In Ballynure Primary School, we place a big emphasis on reading and encouraging a love for reading. We feel that regular reading not only develops skills in Literacy, but skills across the curriculum and indeed helps to promote the wider development of the child.



Numeracy

Mathematics is important in everyday life. Through teaching and learning in this area we aim to develop children's confidence and enthusiasm in using and applying maths skills and knowledge to everyday life.

Teaching Mathematics and Numeracy in Ballynure Primary School covers the five strands, as outlined in the Northern Ireland Curriculum:

- Numbers and Number Systems
- Calculations, Solving Problems and Processes
- Measures
- Data Handling
- Shape and Space

We recognise the importance of cross-curricular links in Numeracy and as such, we provide opportunities to apply skills across the curriculum on a regular basis.

World Around Us

The teaching of The World Around Us in Ballynure Primary School is achieved through exciting topic-based work. Topics vary from year to year and the voice of the pupils is used to determine which topics are best suited to each class. Topics commonly taught in our school include:

All About Me

Egyptians

Vikings

Inventors

Romans

Extreme Weather

The teaching of The World Around Us adopts a cross-curricular approach, but emphasis is put on covering subjects such as History, Geography, Science, Technology and Languages.





The Arts

Pupils in Ballynure Primary School are encouraged to participate in Art, Music and Drama on a regular basis. All three are well-established, classroom-based subjects, taught across the curriculum. In addition to this, P1-3 pupils take part in an annual Nativity Play and pupils from P4-7 take part in a bi-annual Musical Production. There are also extra opportunities throughout the year to take part in dramatic or musical performances, such as Harvest Assembly, Christmas Carol Singing and other special events.



Music



EA peripatetic music lessons are available in woodwind, brass and stringed instruments to our pupils, some of whom reach grade 3 in standard. Involvement in Assemblies, Concerts, Services and Community Events are highlights throughout the year.

Ballynure Primary School has also competed in local music festivals and has been very successful in choir performances. Such achievements are underpinned by the commitment of our teachers to provide a broad range of opportunities for our pupils.



PDMU

Personal Development and Mutual Understanding is taught in every classroom in Ballynure Primary School, as well as being reinforced through assemblies and special guest visitors. The PDMU curriculum is made specific to each age group and focuses on challenges that our pupils may face and how we can overcome these challenges.

We very much focus on a preventative curriculum, aiming to empower our pupils with the skill set to overcoming problems before they arise.



Religious Education

In Ballynure Primary School, we operate with a Christian Ethos and as such, RE is taught from a Christian perspective. The school follows the NI Curriculum RE Non-Statutory Guidance Materials supplemented by a range of other relevant and suitable RE and pastoral care resources.

Provision can be made for pupils whose parents wish to exercise their right to withdraw them from Religious Education and school assemblies. This provision will take the form of work on other curricular areas.



PE & Sport

All children in Ballynure Primary School are encouraged to take part in regular physical activity. We provide a broad range of opportunities for this to happen, either during curriculum PE, Extra-Curricular sports clubs, or specially organised events such as Fitness Friday.

In PE throughout the year, our pupils are given the opportunity to be active in a variety of ways, whilst exploring games, gymnastics, swimming, dance and athletics.

Our pupils are taught appropriate competitiveness and teamwork through physical activity and are given many opportunities to explore these attributes within school, but also outside of school in representing our numerous school sports teams.





Outdoor Learning

Outdoor learning is an important aspect of life in Ballynure Primary. All classes use our outdoor spaces as a means to further the learning of our classroom-based curriculum. Taking learning outside has been shown to improve understanding of subject areas, improve classroom behaviour and engagement and further the interests of pupils.

In Ballynure Primary School, we are proud of our outdoor spaces and strive to maintain and improve our grounds with the help of our pupils. We are a registered Forest School provider, as well as proudly hosting an Eco-Club each week.

Teachers encourage outdoor opportunities throughout the year and aim to incorporate all areas of the curriculum during outdoor lessons.



In this developing world, we understand the importance of teaching core ICT skills to our pupils. The use of ICT is encouraged throughout our curriculum as a cross-curricular skill and to enable all areas to be complimented using Digital Technology.

We are very fortunate in Ballynure Primary School to have enough laptop devices for one per pupil, as well as multiple iPads to teach the use of tablet technology. In addition to this, each of our classes have smart, touch-panel whiteboards, which allow teachers to promote the most modern forms of teaching and learning.



**Using
ICT**





Homework

The school sees a value in children engaging in homework as a means of revising work covered in class, in discovering information unavailable in school, in involving parents positively in their children's studies and in the development of good work habits.

Homework will be given each day from Monday to Thursday and will normally consist of reading and the learning of spelling and number facts. Written homework is provided throughout the week and this varies depending on the age of the pupils.

Parents are asked to sign each child's work when it has been completed to a satisfactory standard. Part of the value of homework is the individual attention a child receives from his/her parent, so support from parents is encouraged.

Assessment

Assessment involves the continuous monitoring of the individual child's progress combined with more formal tests or examinations. A formative record of achievement, which records their progress in all subjects within the N.I. curriculum, is maintained for each child and a formal progress report is issued at the end of each academic year.

Throughout the year, parents will have two formal opportunities to meet with teachers to discuss their child's progress. These will normally take place in October and February. However, should a parent feel it necessary to address particular issues outside of these times, they are welcome to contact the school office to arrange a meeting.





Inclusion & Diversity

In Ballynure Primary School, we support the inclusion and diversity of all pupils, from all different backgrounds.

We aim to develop and nurture a positive attitude to the celebration of all backgrounds and beliefs and do so by encouraging our pupils to:

- Think critically
- Express opinions confidently
- Be self-reliant
- Be self-motivated
- Be self-disciplined
- Take responsibility
- Make choices within a moral context
- Have clear values and attitudes
- Be able to co-operate with others
- Make and sustain good relationships
- Have a healthy lifestyle

S.E.N.

Children who require specialist individual attention because of learning difficulties may be taught either individually or in small groups for some periods each week by our Learning Support Coordinator or by our Classroom Assistants.

Parents will receive copies of individual education plans for their child and will be asked to support and review such plans. A copy of the school's Special Educational Needs Policy may be inspected by contacting the Principal.



Safeguarding & Pastoral Care

The school takes the issue of child protection extremely seriously and we have support available to children provided by two teachers designated to coordinate this area of pastoral care, along with our Principal. Mrs Woods is our Designated Teacher for Child Protection and Mrs Galashan is our Deputy Designated Teacher for Child Protection.

Our Chair of Governors is fully trained in Child Protection as is the Vice Chair, who also acts as the Child Protection Governor. Mr Trussell completes the Safeguarding team as Principal of our school.

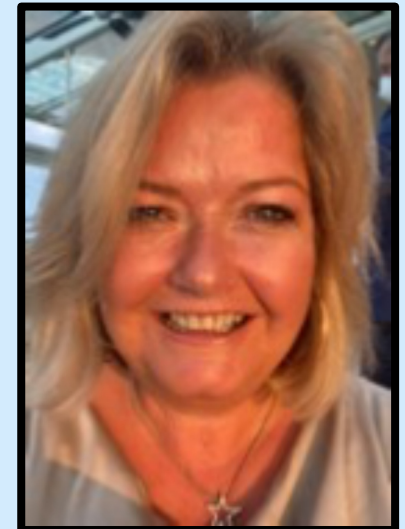
All staff at Ballynure Primary School are fully trained to an appropriate level in child protection and are committed to looking after the pastoral needs of every child in their class.



Principal – Mr Trussell



Designated Teacher
Mrs Woods



Deputy Designated
Teacher
Mrs Galashan

Our Typical Day

8.00am – 8.50am	Breakfast Club
8.50am – 9.00am	Pupils Enter School Playground
9.00am	School Day Starts
10.30am – 10.40am	Break Time
12.15pm – 1.00pm	Lunch Time
2.00pm	Primary 1-3 Finish Time
3.00pm	Primary 4-7 Finish Time
3.40pm	Extra Curricular Clubs Finish Time
2.00pm – 4.00pm	Afternoon Club





Extra Curricular

In Ballynure Primary School we believe that extra-curricular clubs are an important aspect of what we deliver as a school. These clubs provide additional opportunities for our pupils to discover new talents, engage in teamwork, try new things and make new friends. We are very fortunate to draw upon the many skills and talents of our teachers to deliver a broad variety of clubs.

We are also always looking into different opportunities for our children and welcome any suggestions for new clubs.

Extra-curricular clubs currently on offer in Ballynure include:

- Football
- Hockey
- Games
- Bible Club
- ICT
- Eco
- Choir

Wrap Around

We are very proud to be able to offer our parents wrap around care facilities.

Our Breakfast Club runs daily from 8.00am to 8.50am. Here, a selection of breakfast food and drink is available, along with a selection of activities, crafts and games for the pupils.

Our Afternoon Club runs from 2.00pm to 4.00pm and again, a selection of activities, crafts and games are available to our pupils. A small snack is also served in Afternoon Club.



School Meals & ParentPay

Break

As we try to encourage healthy eating in Ballynure, we would suggest that you provide a healthy snack in keeping with the 'Healthy Breaks' initiative – fruit, vegetables, bread-based snacks and a drink of water or milk which the children eat in their classrooms before going out to play.

Lunch - School Dinners

The school operates as a dining centre and school meals are available daily. Families in receipt of certain benefits etc. are entitled to free school meals. Application forms are available from and processed by the Education Authority. Please contact the school office if you require assistance with your application.

Lunch - Packed Lunches

Children who bring packed lunches eat in their classrooms and are supervised by their teacher from 12.15 – 12.30pm. Please send a manageable amount of food.

All drinks should be brought in plastic containers. (No glass containers and no carbonated drinks please). We would ask that you provide healthy eating options.

ParentPay

In Ballynure, we operate as a cashless school. In place of cash, we use an online system called ParentPay. This allows parents to book school dinners, along with other items, online and pay for these digitally.



ParentPay

School Trips & P7 Residential

All children in Ballynure Primary School will experience at least one school trip per year. For P1-6, these take the form of daytrips to venues within Northern Ireland. Where possible, these trips will be linked to a classroom topic, which allows extension of knowledge to be gained. In addition to days trips, our P7 pupils also receive the opportunity to attend a residential visit towards the end of their school year.



Girls' Uniform

Blue polo shirt or blue shirt and
school tie

Navy school sweatshirt or navy
cardigan

Navy skirt or pinafore

Black shoes

Blue checked dress (Summer term
and September – Optional)

White socks or navy tights





Boys' Uniform

Blue polo shirt or blue shirt and
school tie

Navy school sweatshirt

Navy trousers

Black shoes

Navy shorts (Summer term and
September – Optional)

Jewellery and extreme hair styles are not permitted.

All uniform items are available from Woodside's in Larne or Sport & Sound in Ballyclare.

School Uniform Allowance is available through applications from the Education Authority.

At the Heart of the Community



Ballynure Primary School has a good relationship with many members of the local community. Our children regularly participate in community events such as carol singing at Christmas, collecting food for the food bank and litter picking in our local green areas.

In addition to this, we are very fortunate to have volunteers from local businesses who come into school each week to enhance learning in our topics.

We have strong connections with the local community groups and always look for opportunities to help each other out. Our Summer Fair is an annual event in which we invite the whole community into our school grounds.

Charging & Remissions

Education in Ballynure Primary School is provided free of charge for all lessons and activities connected with the child's entitlement under the Education Reform Order. The only occasion on which payment may be required is for board and lodging on an overnight trip, though in such a case the charge will be remitted to those parents on income support.

The school will, as it has done in the past, appeal to parents from time to time for voluntary donations to help fund out-of-school trips, but it is stressed that no child will be disadvantaged in any way if parents choose not to make a contribution. However, the viability of out-of-school trips may depend on the level of voluntary contributions.

The school may take part in 'optional extras' which are not connected with the school's formal curriculum such as visits to the theatre. It is stressed that failure to participate in these will not affect a child's performance at school. Written parental consent will be required before a child participates in school trips.






In accordance with the school's policy of promoting a positive partnership with parents in the education of their children, in those cases where parents consider the curriculum provision is not satisfactory, they are welcome to express their concerns. This should be done in accordance with the following procedure:

Communication & Concerns

- (a) Contact the Principal. If necessary, the Principal will arrange a meeting with the class teacher in the case of specific complaints.**
- (b) If the situation is unresolved ask the Principal to refer the matter to the Chairperson of the Board of Governors.**
- (c) If the Chairperson of the Board of Governors fails to resolve the matter it should be referred to the Education Authority Northern Region.**

We are constantly reviewing and evaluating our policy, procedures and practices and welcome constructive feedback.

Drop Off & Collection

 Car parking at Ballynure Primary School is offered by The Church of Ireland, which is situated adjacent to the school grounds. Parents are encouraged to use this car park when collecting their children to ensure consideration is given to our neighbours.

 Ballynure Primary School.





Visit our
Website

Ballynure Primary School

2 Lismenary Road, Ballynure, Ballyclare, BT39 9UE

Telephone: 028 9332 3113

Email: ctrussell218@c2kni.net Website: www.ballynureps.org



Visit our
Facebook Page